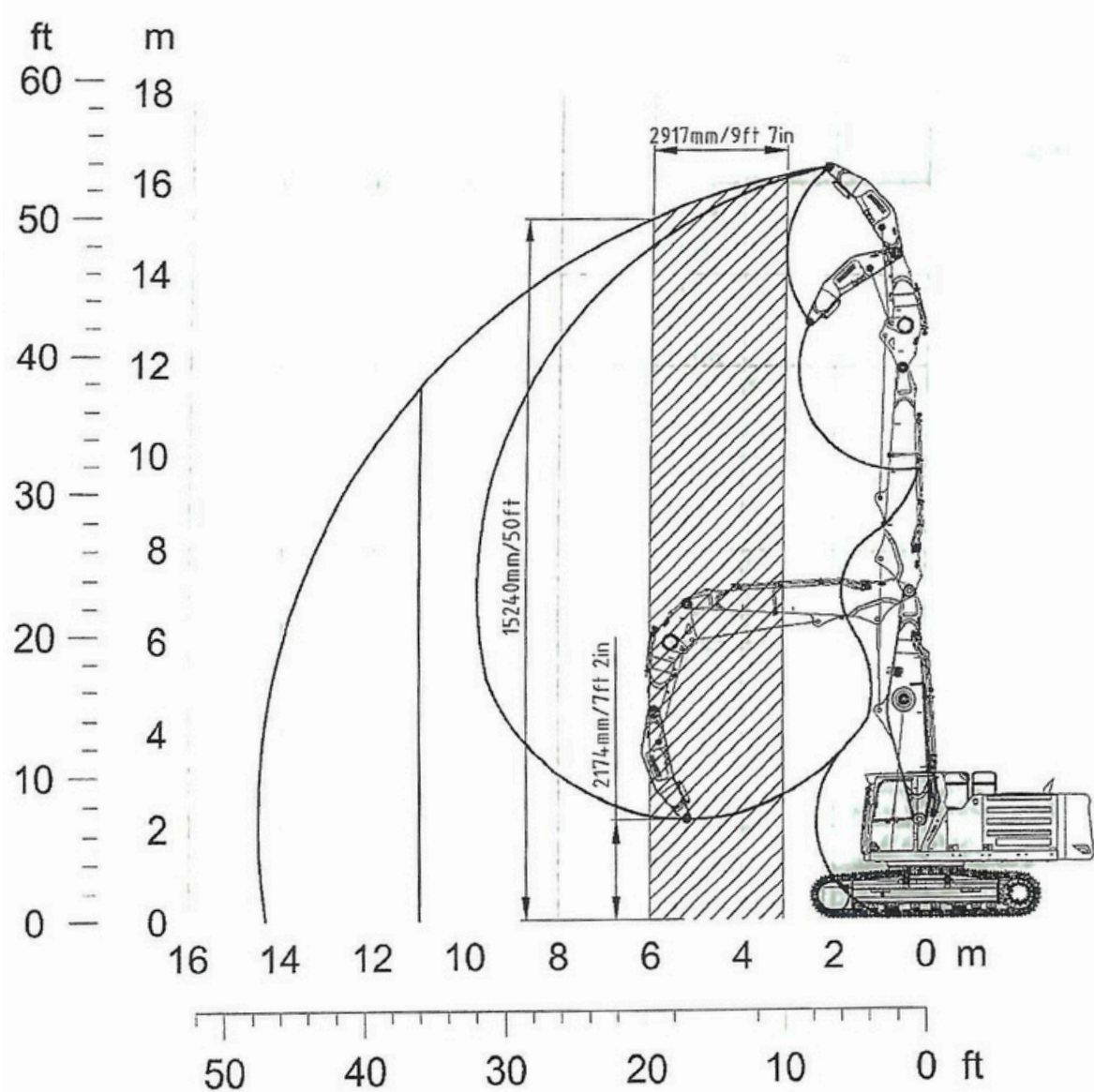


## FRONT END EQUIPMENT SPECIFICATION

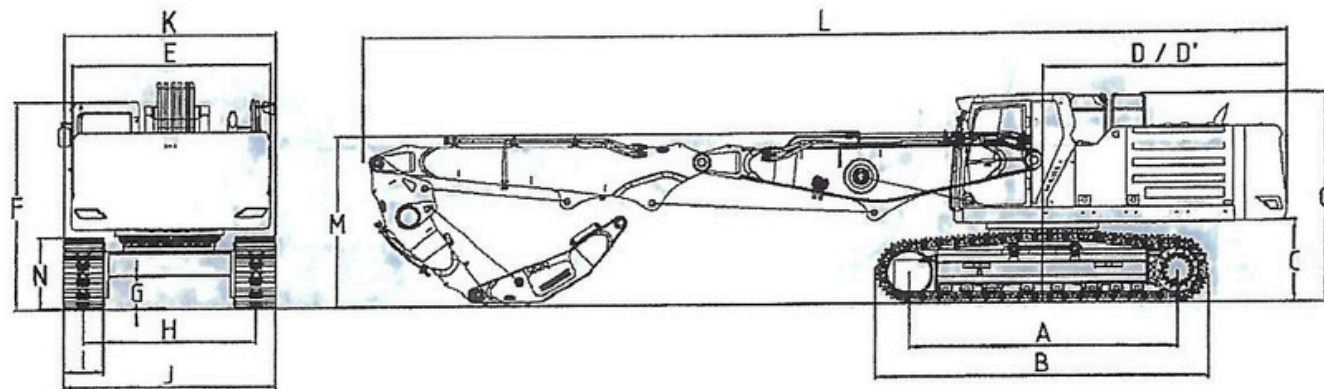
<b>1ST MEMBER:</b>	BASE TAB	5.0 m
<b>2ND MEMBER:</b>	TOP TAB	4.85 m
<b>3RD MEMBER:</b>	MID DIPPER	2.5 m
<b>1ST MEMBER:</b>	SWAB NECK DIPPER	2.4 m
<b>LINKAGE CLASS</b>	N/A	
<b>CYLINDER SPECIFICATION: BORE x ROD x STROKE</b>		
<b>HOIST:</b>	180 x 130 x 1 280mm (2x)	
<b>2ND MEMBER:</b>	160 x 110 x 1330mm (2x)	
<b>3RD MEMBER:</b>	180 x 130 x 1480mm (1x)	
<b>ATTACHMENT</b>	N/A	



DATA SHEET- RANGE  
CAT 340  
PILING - 40FT

**RIG-RENTS**

	UNIT: In.
<b>A. DISTANCE BETWEEN TUMBLERS</b>	159
<b>B. UNDERCARRIAGE LENGTH</b>	198
<b>C. COUNTERWEIGHT CLEARANCE</b>	49
<b>D. REAR-END SWING RADIUS</b>	139
<b>D. REAR-END LENGTH</b>	139
<b>E. OVERALL WIDTH OF UPPER STRUCTURE</b>	117
<b>F. OVERALL HEIGHT OF CAB</b>	125
<b>G. MIN. GROUND CLEARANCE</b>	20
<b>H. TRACK GUAGE</b>	102
<b>I. TRACK SHOES WIDTH</b>	24
<b>J. UNDERCARRIAGE WIDTH</b>	126
<b>K. OVERALL WIDTH</b>	126
<b>L. OVERALL LENGTH</b>	545
<b>M. OVERALL HEIGHT OF BOOM</b>	102
<b>N. TRACK HEIGHT</b>	43
<b>O. OVERALL HEIGHT OF BASE MACHINE</b>	125



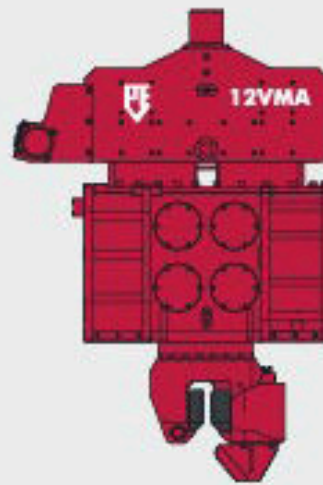
	UNIT: LBS.
<b>MACHINE WEIGHT WITHOUT TOOL</b>	105,600
<b>TOOL AND/OR HITCH (MAX WEIGHT)</b>	13,230
<b>SOIL PAYLOAD (MAX WEIGHT)</b>	N/A
<b>MAX MACHINE WEIGHT COMBINED (118,830)</b>	118,830

	UNIT: kg/m <sup>2</sup>	UNIT: kPA	UNIT: Psi
<b>1.SOFT GROUND - WHOLE SHOE CONTACT</b>	11,119	109	16
<b>1.SOFT GROUND - TIP POINT (1/4 CTR'S CONTACT)</b>	44,477	436	63
<b>2.FIRM GROUND- GROUND LUG CONTACT ONLY</b>	81,676	801	116
<b>2.FIRM GROUND- TIP POINT(2 GROUSER LUG CONTACT)</b>	2,246,083	22,027	3,195

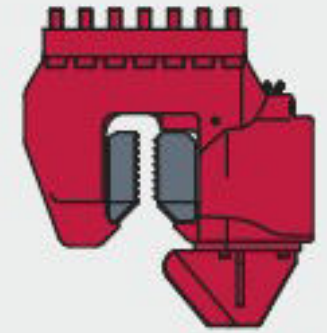
**THEORETIC GROUND PRESSURE IS DETERMINED USING THE "MAXIMUM MACHINE WEIGHT (COMBINED)", THUS PROVIDING THE HIGHEST POSSIBLE GROUND PRESSURE.**

1. "SOFT GROUND" REFERS TO WHEN THE EXCAVATOR IS POSITIONED ON LOOSE GROUND AND THE GROUSER LUGS EMBED INTO THE SURFACE, THEREFORE THE ENTIRE SHOE IS PUTTING PRESSURE ONTO THE SURFACE.
2. "FIRM GROUND" REFERS TO WHEN ONLY THE GROUSER LUGS ARE IN CONTACT WITH THE GROUND, FOR EXAMPLE WHEN THE MACHINE IS POSITIONED ON A SOLID CONCRETE SURFACE.

OEM BASE MACHINED MODIFIED BY "KOCUREK EXCAVATORS LTD." MEASUREMENTS STATED IN THE TABLE ABOVE ARE DETERMINED IN CONJUNCTION WITH OEM LITERATURE. FOR FURTHER INFORMATION REFER TO OEM LITERATURE OR INDEPENDENT DRAWINGS: SUPPLIED BY "KOCUREK EXCAVATORS LTD."



**12VMA**



**100TU**

Eccentric moment	kgm	0 - 12.0
Max. centrifugal force	kN	0 - 700
Max. frequency	rpm	2300
Max. amplitude *)	mm	0 - 16.6
Max. static line pull	kN	200
Max. pull-down	kN	100
Max. oil flow **)	L/min	261
Max. operating pressure	bar	350
Dynamic weight *)	kg	1450
Total weight *)	kg	2225
L x W x H *)	mm	1519 x 674 x 1597

Clamping force	1000
Working pressure	320
Weight	490
L x W x H	686 x 340 x 706