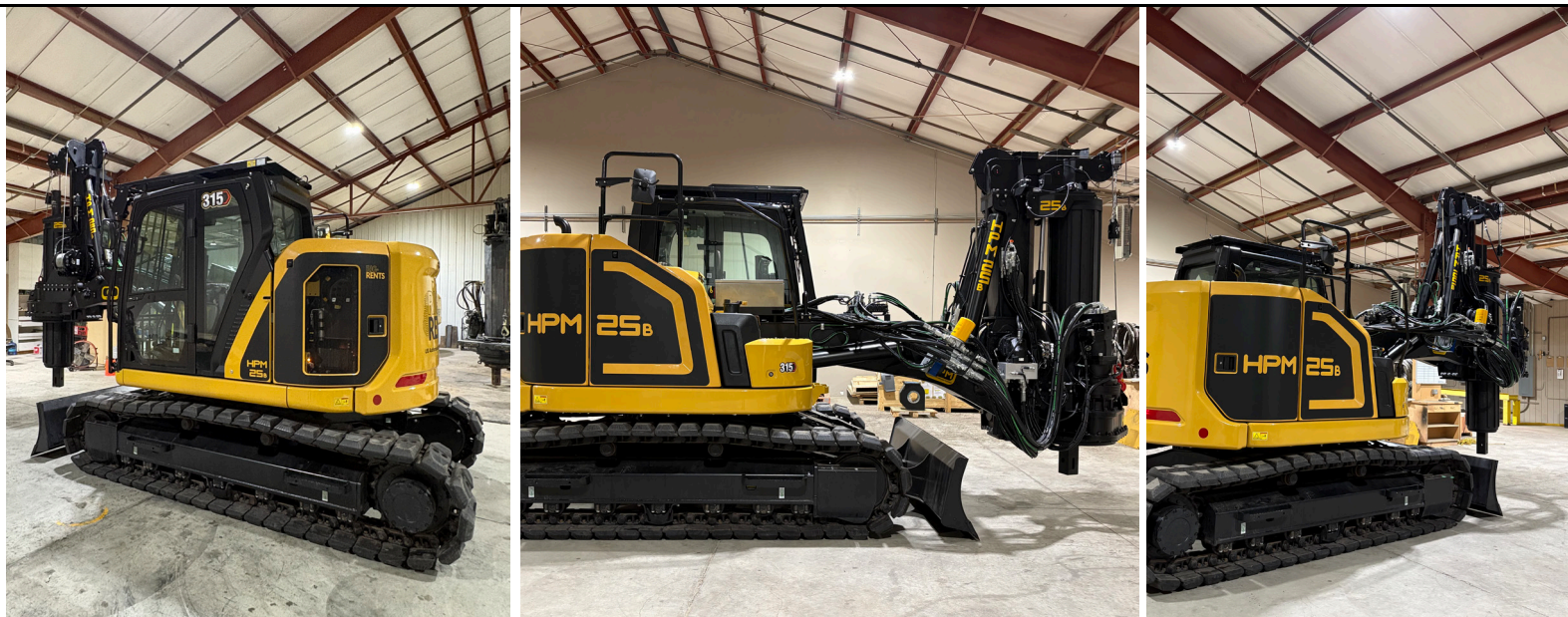


HPM 25_B SM



SPECIFICATIONS

Base

| | | |
|-------------------------|----------|---------------------|
| Model: | CAT®315 | |
| Engine model: | CAT C3.6 | |
| Power rating ISO 14396: | 81 kW | 110 HP |
| Displacement: | 3.6 l | 220 in ³ |
| Fuel Tank: | 187 l | 49 gal |

Undercarriage

| | | |
|---------------------|-------------|-----|
| Undercarriage Type: | Fixed Width | |
| Width: | 2490mm | 98" |
| Shoe Width: | 500mm | 20" |

Rotary

| | | |
|-----------------------|-----------|-------------|
| Max Effective Torque: | 35 kNm | 25900 lb.ft |
| Working Speed: | 16-90 rpm | |
| Working Gears: | 10 | |

Main Winch

| | | |
|-----------------|-------|-----------|
| Max Pull Force: | 85 kN | 19000 lbf |
| Rope Diameter: | 19 mm | 3/4" |

Auxiliary Winch

| | | |
|-----------------|-------|----------|
| Max Pull Force: | 31 kN | 7000 lbf |
| Rope Diameter: | 10 mm | 3/8" |

Crowd System

| | | |
|-------------|----------------------|-----------|
| Crowd Type: | Cylinders Crowd Pull | |
| Pull Force: | 110 kN | 25000 lbf |

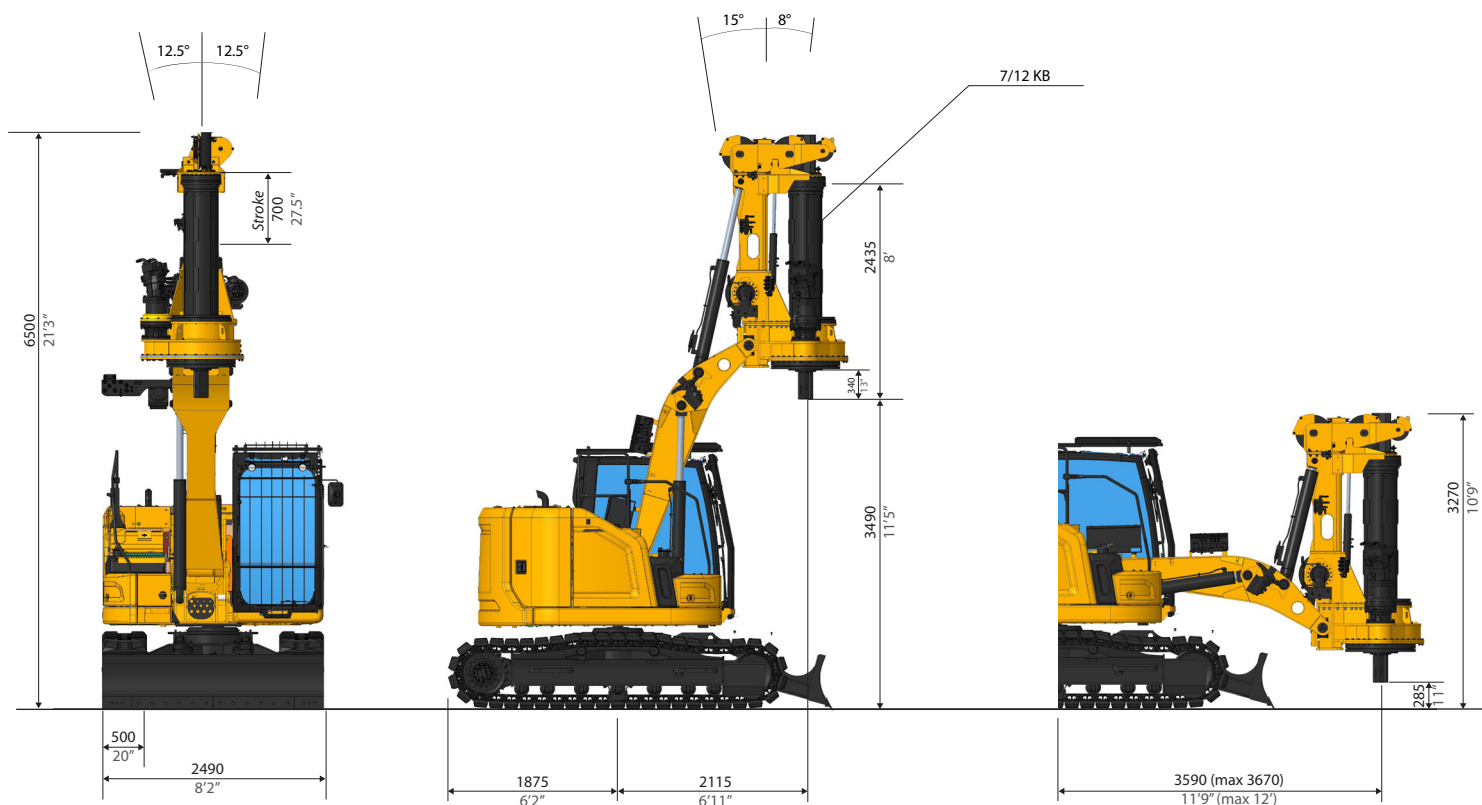
Drilling Data

| | | |
|---------------------------|-------|-------|
| Standard Kelly bar: | 7/32 | |
| Drilling Depth*: | 9.9 m | 32'6" |
| Drilling Depth with 9/13: | 13 m | 42'8" |

*Different Kelly-Bar available on request

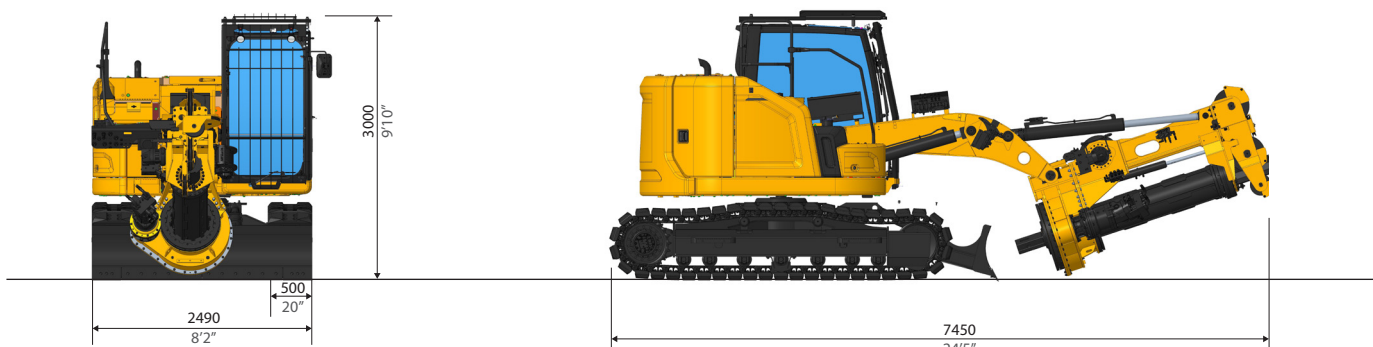


GENERAL DIMENSIONS



TRANSPORT DIMENSIONS

Transport & Operating Weight:
 19000 kg
 41900 LBS



MAIN STANDARD EQUIPMENT

- Multifunctional HPM Computer
- Travel Alarm
- Cameras
- Automatic Mast Verticalization
- Auto Alignment with memory function

- Rotary Speed Control
- 10 Gears System
- Remote Diagnostics/Updates
- Removable Counterweight
- Extendable Undercarriage

OPTIONAL EQUIPMENT

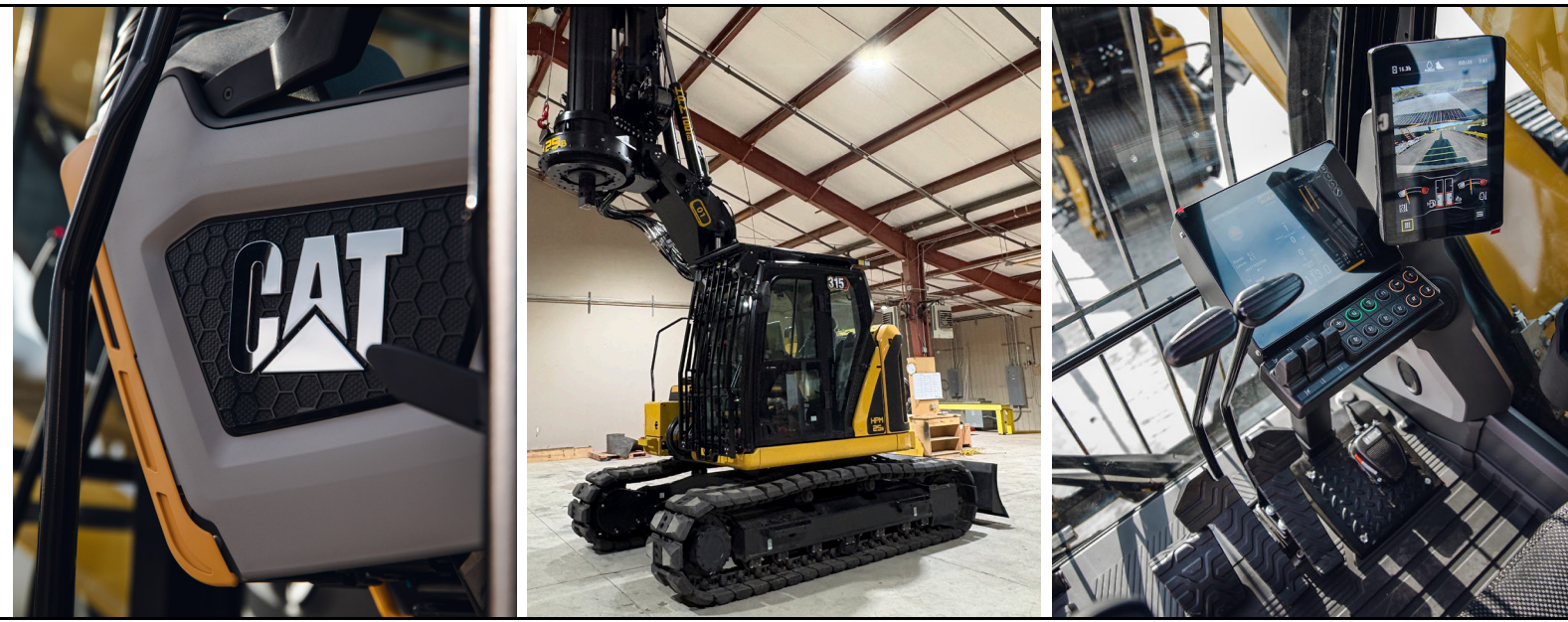
- Aux. Swing Brake
- Casign Oscillator Predisposition
- Universal Casing Joint
- Remote Control

- Self Erecting Counterweight
- FOPS cab
- Biodegradable Hydraulic Oil
- Central Lubrification System
- Long Mast Kit

Design developments and process improvements may require the specification and materials to be updated and changed without prior notice or liability.

These and the technical data are provided as indicative information only, with any errors and misprints reserved.

HPM 25_B



SPECIFICATIONS

Base

| | | |
|-------------------------|----------|---------------------|
| Model: | CAT®315 | |
| Engine model: | CAT C3.6 | |
| Power rating ISO 14396: | 81 kW | 110 HP |
| Displacement: | 3.6 l | 220 in ³ |
| Fuel Tank: | 187 l | 49 gal |

Undercarriage

| | | |
|---------------------|-------------|-----|
| Undercarriage Type: | Fixed Width | |
| Width: | 2490mm | 98" |
| Shoe Width: | 500mm | 20" |

Rotary

| | | |
|-----------------------|-----------|-------------|
| Max Effective Torque: | 35 kNm | 25900 lb.ft |
| Working Speed: | 16-90 rpm | |
| Working Gears: | 10 | |

Main Winch

| | | |
|-----------------|-------|-----------|
| Max Pull Force: | 85 kN | 19000 lbf |
| Rope Diameter: | 19 mm | 3/4" |

Auxiliary Winch

| | | |
|-----------------|-------|----------|
| Max Pull Force: | 31 kN | 7000 lbf |
| Rope Diameter: | 10 mm | 3/8" |

Crowd System

| | | |
|-------------|----------------------|-----------|
| Crowd Type: | Cylinders Crowd Pull | |
| Pull Force: | 110 kN | 25000 lbf |

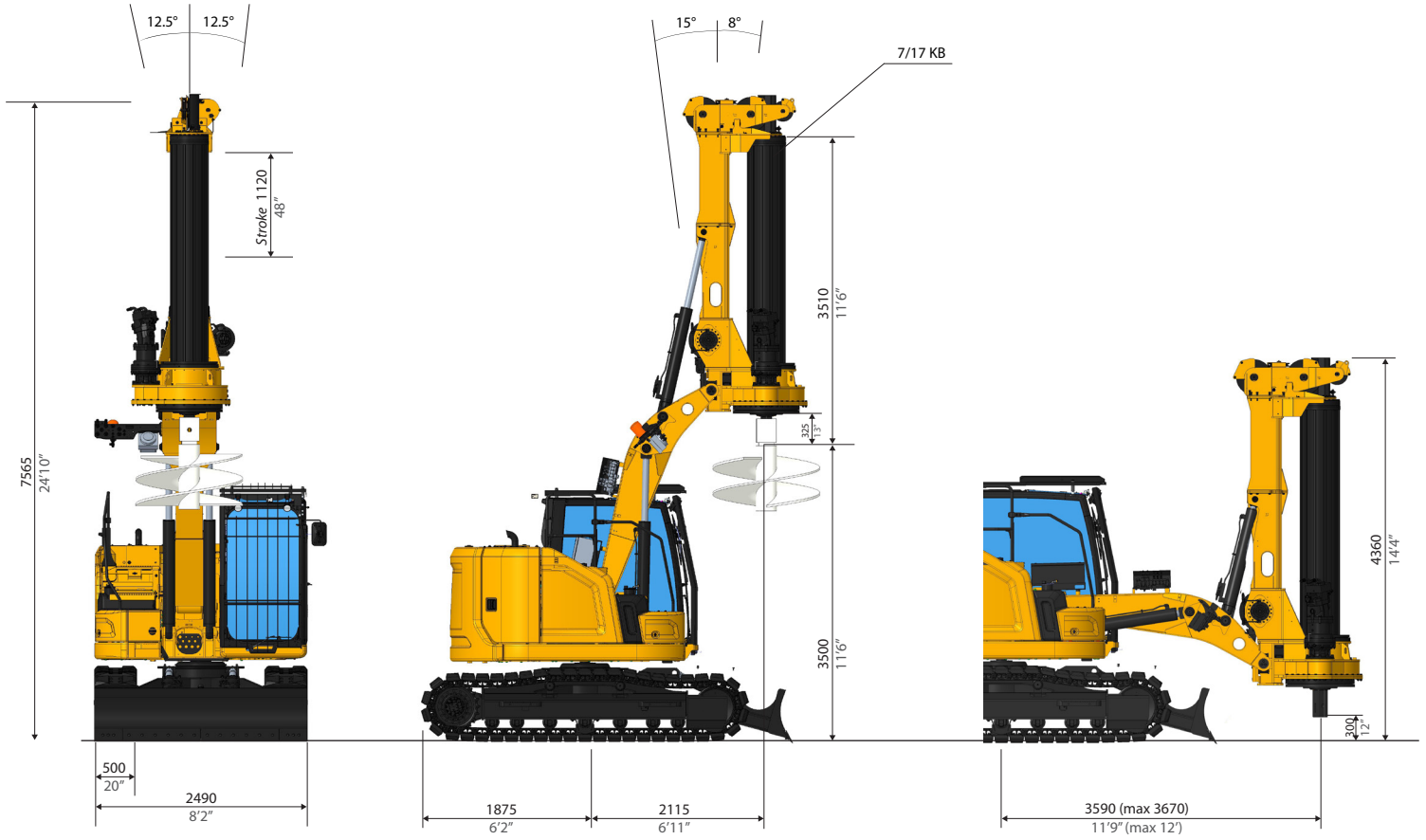
Drilling Data

| | | |
|---------------------|--------|-----|
| Standard Kelly bar: | 7/17 | |
| Drilling Depth: | 16.8 m | 55' |

*Different Kelly-Bar available on request

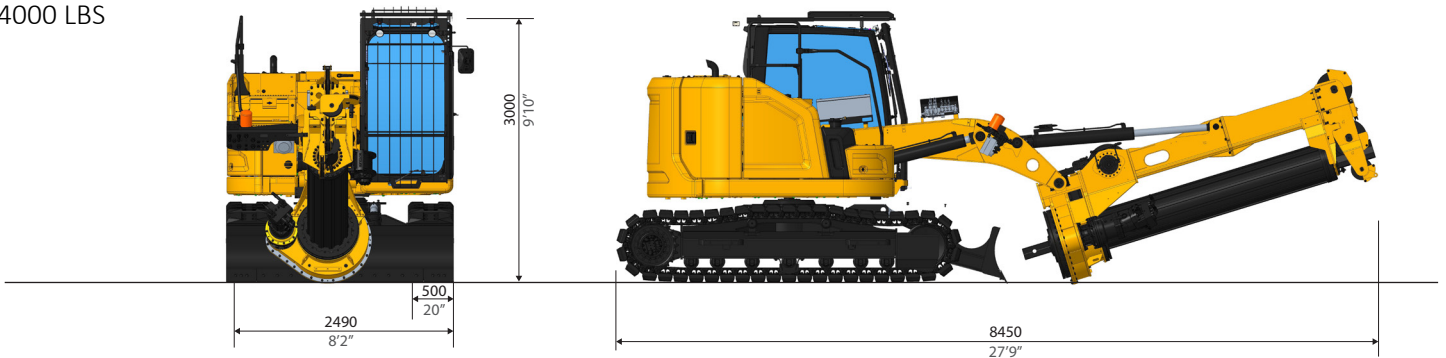


GENERAL DIMENSIONS



TRANSPORT DIMENSIONS

Transport & Operating Weight:
20000 kg
44000 LBS



MAIN STANDARD EQUIPMENT

- Multifunctional HPM Computer
- Travel Alarm
- Cameras
- Automatic Mast Verticalization
- Auto Alignment with memory function

- Rotary Speed Control
- 10 Gears System
- Remote Diagnostics/Updates
- Removable Counterweight
- Dozer Blade
- Rubber Tracks

OPTIONAL EQUIPMENT

- Casign Oscillator Predisposition
- Universal Casing Joint
- Remote Control
- Self Erecting Counterweight
- FOPS cab
- Biodegradable Hydraulic Oil
- Central Lubrification System
- Short Mast Kit

Design developments and process improvements may require the specification and materials to be updated and changed without prior notice or liability.

These and the technical data are provided as indicative information only, with any errors and misprints reserved.