

HPM 55_B



SPECIFICATIONS

Base

Model:	CAT 317 NGH	
Engine model:	CAT C3.6	
Power rating ISO 14396:	99 kW	133 HP
Displacement:	3.6 l	220 in ³
Fuel Tank:	271l	71.6 gal

Undercarriage

Undercarriage Type:	Fixed Width	
Width:	2590mm	102"
Shoe Width:	600mm	2'

Rotary

Rotary Torque:	85 kNm	63500 lb.ft
Max Effective Torque:	74 kNm	54000 lb.ft
Working Speed:	0-30 rpm	
Working Gears:	10	
Discharge Speed:	60 rpm	

Main Winch

Max Pull Force:	98 kN	22000 lbf
Starting Pull Force:	106 kN	24000 lbf
Rope Speed 1st Layer:	83 m/min	272 ft/min
Rope Speed 2nd Layer:	89 m/min	290 ft/min
Rope Diameter:	19 mm	3/4"

Auxiliary Winch

Max Pull Force:	30 kN	6750 lbf
Rope Speed:	55 m/min	180 ft/min
Rope Diameter:	12 mm	15/35"

Crowd System

Crowd Type:	Winch Crowd Pull	
Pull Force:	103 kN	23150 lbf

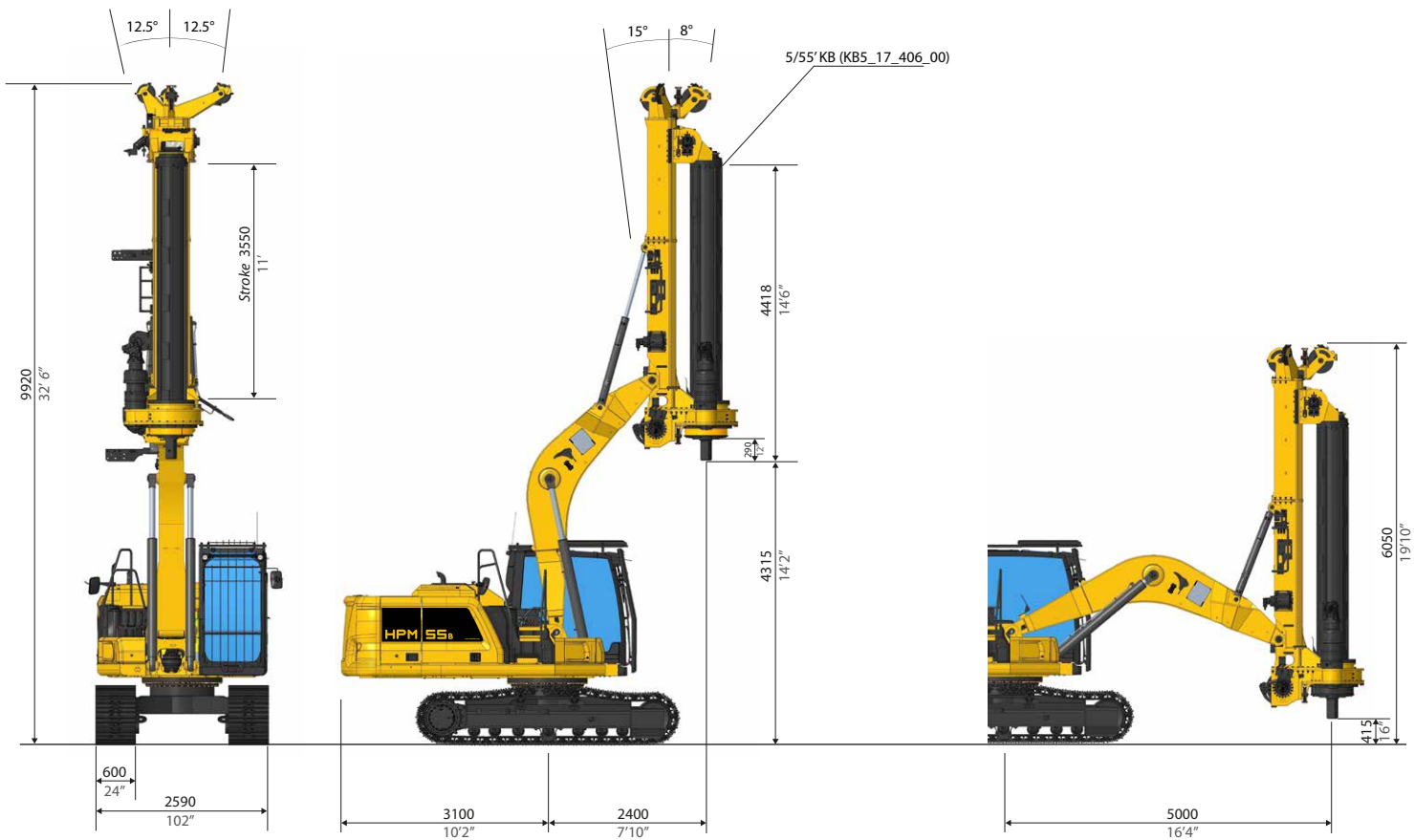
Drilling Data

Standard Kelly bar:	5/53	
Drilling Depth:	16.8 m	55 ft

*Different Kelly-Bar available on request

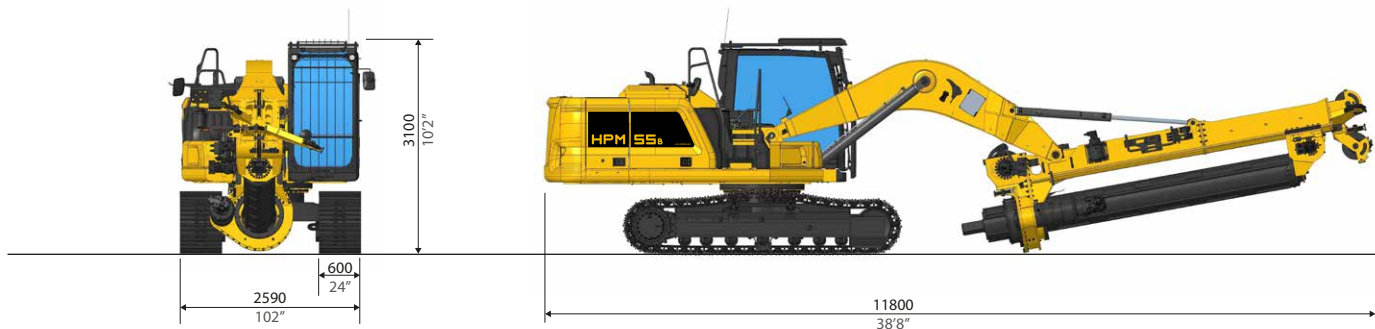


GENERAL DIMENSIONS



TRANSPORT DIMENSIONS

Transport Weight: 25500 kg
56000 LBS



MAIN STANDARD EQUIPMENT

- Multifunctional HPM Computer
- Travel Alarm
- Cameras
- Automatic Mast Verticalization
- Auto Alignment with memory function
- Rotary Speed Control
- 10 Gears System
- Remote Diagnostics/Updates
- Removable Counterweight
- Extendable Undercarriage

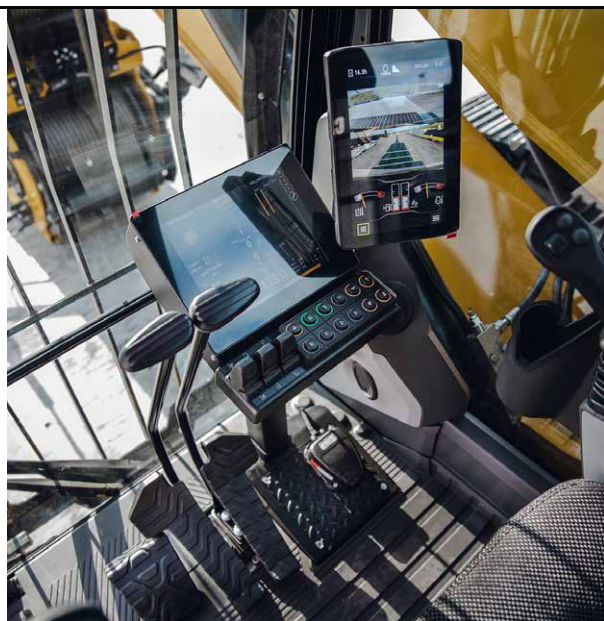
OPTIONAL EQUIPMENT

- Aux. Swing Brake
- Casign Oscillator Predisposition
- Universal Casing Joint
- Remote Control
- Self Erecting Counterweight
- FOPS cab
- Biodegradable Hydraulic Oil
- Central Lubrification System
- Short Mast Kit

Design developments and process improvements may require the specification and materials to be updated and changed without prior notice or liability.

These and the technical data are provided as indicative information only, with any errors and misprints reserved.

HPM 55_B SM



SPECIFICATIONS

Base

Model:	CAT 317 NGH	
Engine model:	CAT C3.6	
Power rating ISO 14396:	99 kW	133 HP
Displacement:	3.6 l	220 in ³
Fuel Tank:	271l	71.6 gal

Undercarriage

Undercarriage Type:	Fixed Width	
Width:	2590mm	102"
Shoe Width:	600mm	2'

Rotary

Rotary Torque:	85 kNm	63500 lb.ft
Max Effective Torque:	74 kNm	54000 lb.ft
Working Speed:	0-30 rpm	
Working Gears:	10	
Discharge Speed:	60 rpm	

Main Winch

Max Pull Force:	98 kN	22000 lbf
Starting Pull Force:	106 kN	24000 lbf
Rope Speed 1st Layer:	83 m/min	272 ft/min
Rope Speed 2nd Layer:	89 m/min	290 ft/min
Rope Diameter:	19 mm	3/4"

Auxiliary Winch

Max Pull Force:	30 kN	6750 lbf
Rope Speed:	55 m/min	180 ft/min
Rope Diameter:	12 mm	15/35"

Crowd System

Crowd Type:	Winch Crowd Pull	
Pull Force:	103 kN	23150 lbf

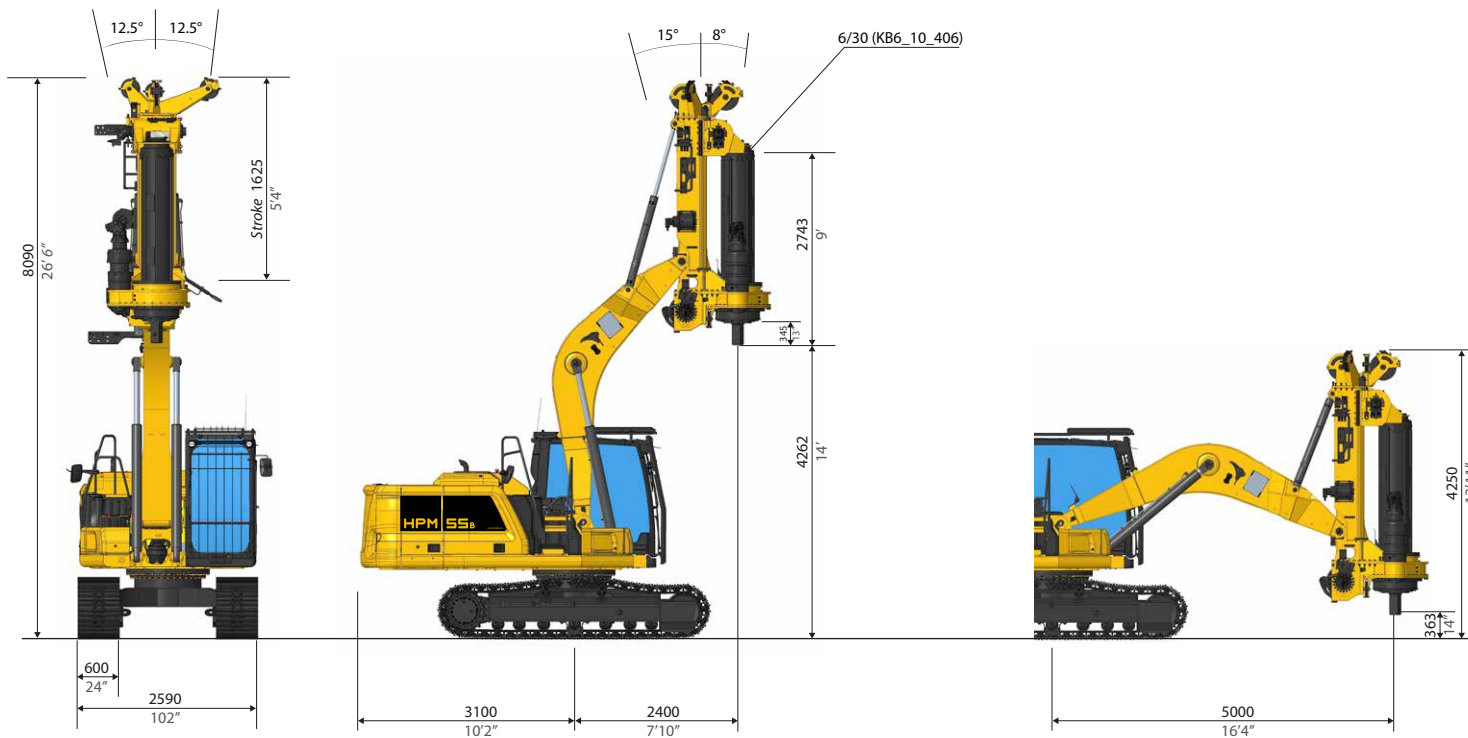
Drilling Data

Standard Kelly bar:	6/30'	
Drilling Depth:	10 m	32ft

*Different Kelly-Bar available on request

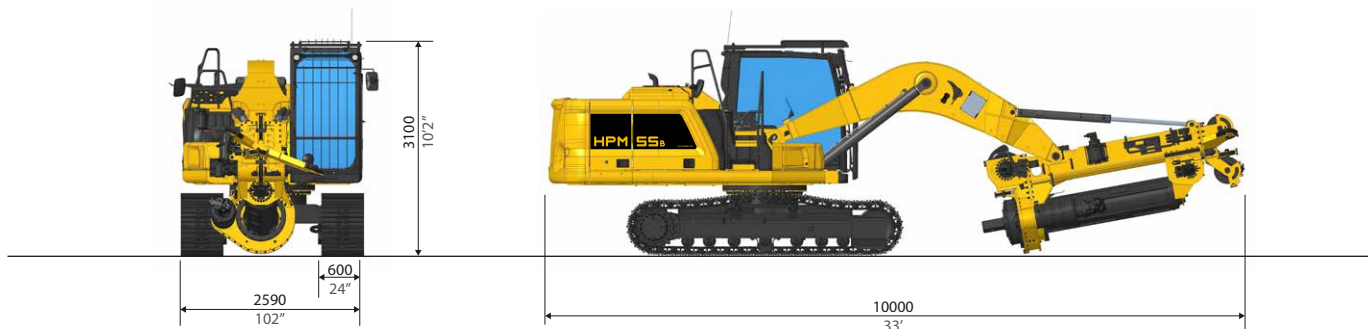


GENERAL DIMENSIONS



TRANSPORT DIMENSIONS

Transport Weight: 25000 kg
55100 LBS



MAIN STANDARD EQUIPMENT

- Multifunctional HPM Computer
- Travel Alarm
- Cameras
- Automatic Mast Verticalization
- Auto Alignment with memory function

- Rotary Speed Control
- 10 Gears System
- Remote Diagnostics/Updates
- Removable Counterweight
- Extendable Undercarriage

OPTIONAL EQUIPMENT

- Aux. Swing Brake
- Casign Oscillator Predisposition
- Universal Casing Joint
- Remote Control

- Self Erecting Counterweight
- FOPS cab
- Biodegradable Hydraulic Oil
- Central Lubrification System
- Long Mast Kit

Design developments and process improvements may require the specification and materials to be updated and changed without prior notice or liability.

These and the technical data are provided as indicative information only, with any errors and misprints reserved.