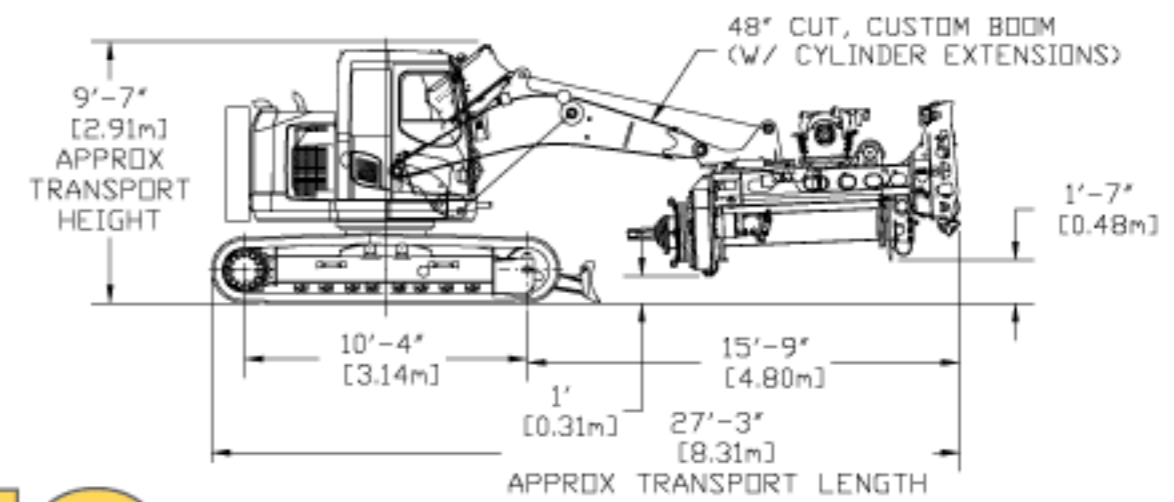
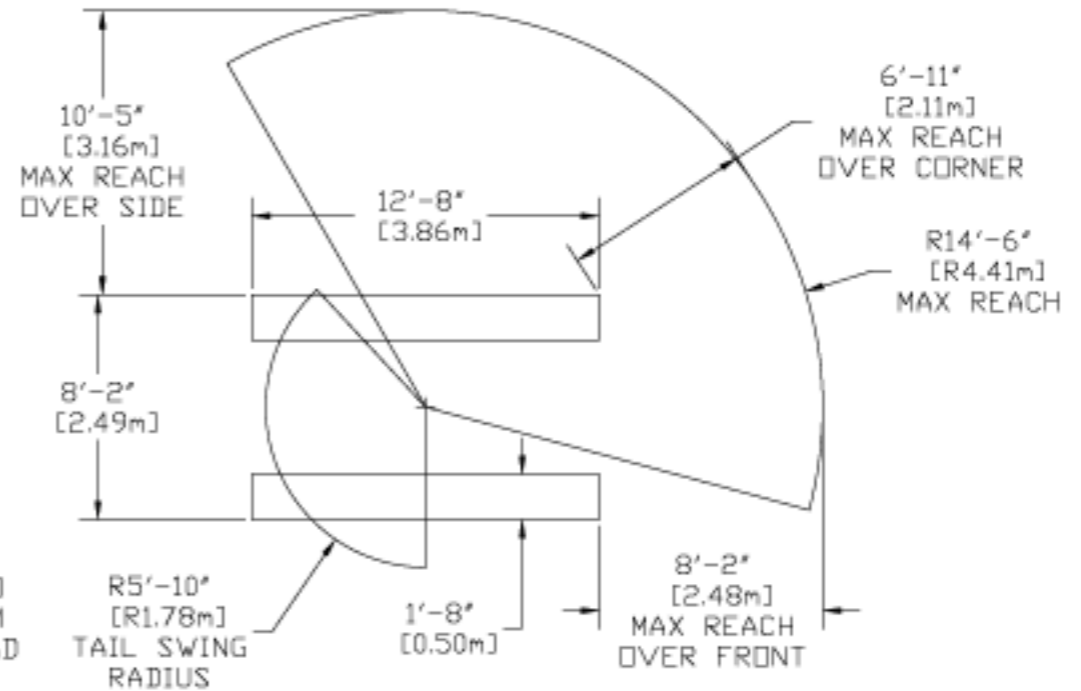
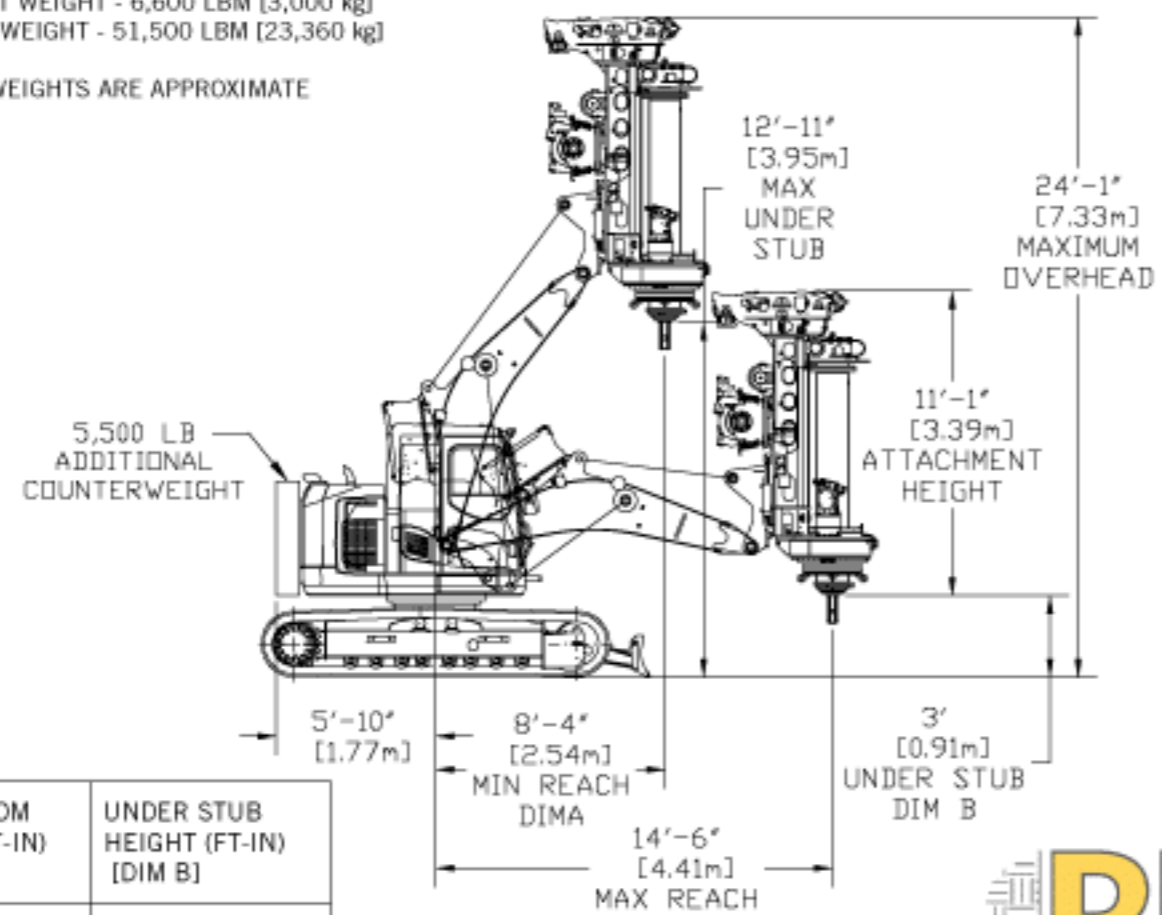


SPECIFICATIONS:

- TORQUE - 25,000 FT-LBF [33.9 kNm]
- DRILLING DEPTH - 50 FT [15.2 m]
- BASE MACHINE - KOMATSU PC 138 USLC-11
- DRILL SPEED - 0 TO 60 RPM
- SPIN OFF - 100 RPM
- CROWD STROKE - 60 IN [1.5 m]
- CROWD FORCE - 24,500 LBF [109 kN] (HYDRAULIC)
- KELLY WINCH - 18,000 LBF [80 kN]
- (FIRST LAYER)
- SERVICE WINCH - 4,500 LBF [20 kN]
- (FIRST LAYER, OPTIONAL)
- SIDE TILT - 14 DEG. LEFT/RIGHT
- KELLY BARSET - 8 ELEMENT SQUARE, 3,100 LBM [1,400 kg]
- ATTACHMENT WEIGHT - 6,600 LBM [3,000 kg]
- TRANSPORT WEIGHT - 51,500 LBM [23,360 kg]

*ALL WEIGHTS ARE APPROXIMATE



RADIUS FROM CENTER (FT-IN) [DIM A]	UNDER STUB HEIGHT (FT-IN) [DIM B]
8'-4" [2.54 m]	12'-11" [3.95 m]
10' [3.05 m]	11'-11" [3.64 m]
12' [3.66 m]	10'-0" [3.05 m]
14'-6" [4.41 m]	3'-0" [0.91 m]

RIG-RENTS
 WWW.RIG-RENTS.COM PH: (833)RIG-RENT

TR25-LO
 ON KOMATSU PC138 USLC-11